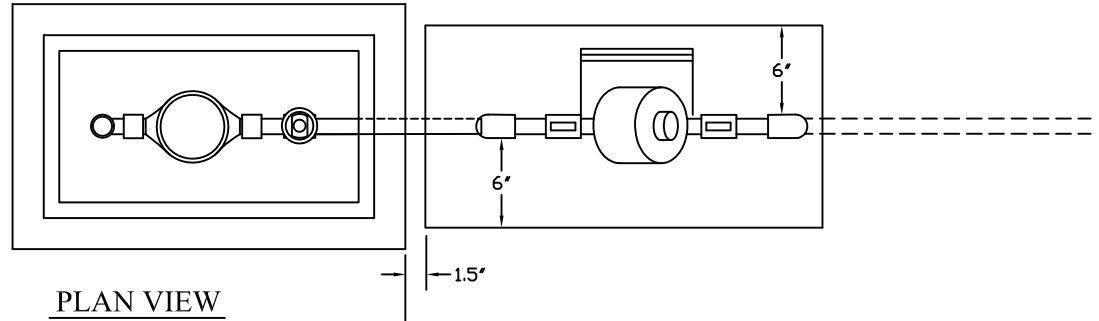
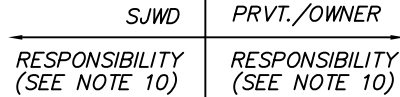


NOTES:

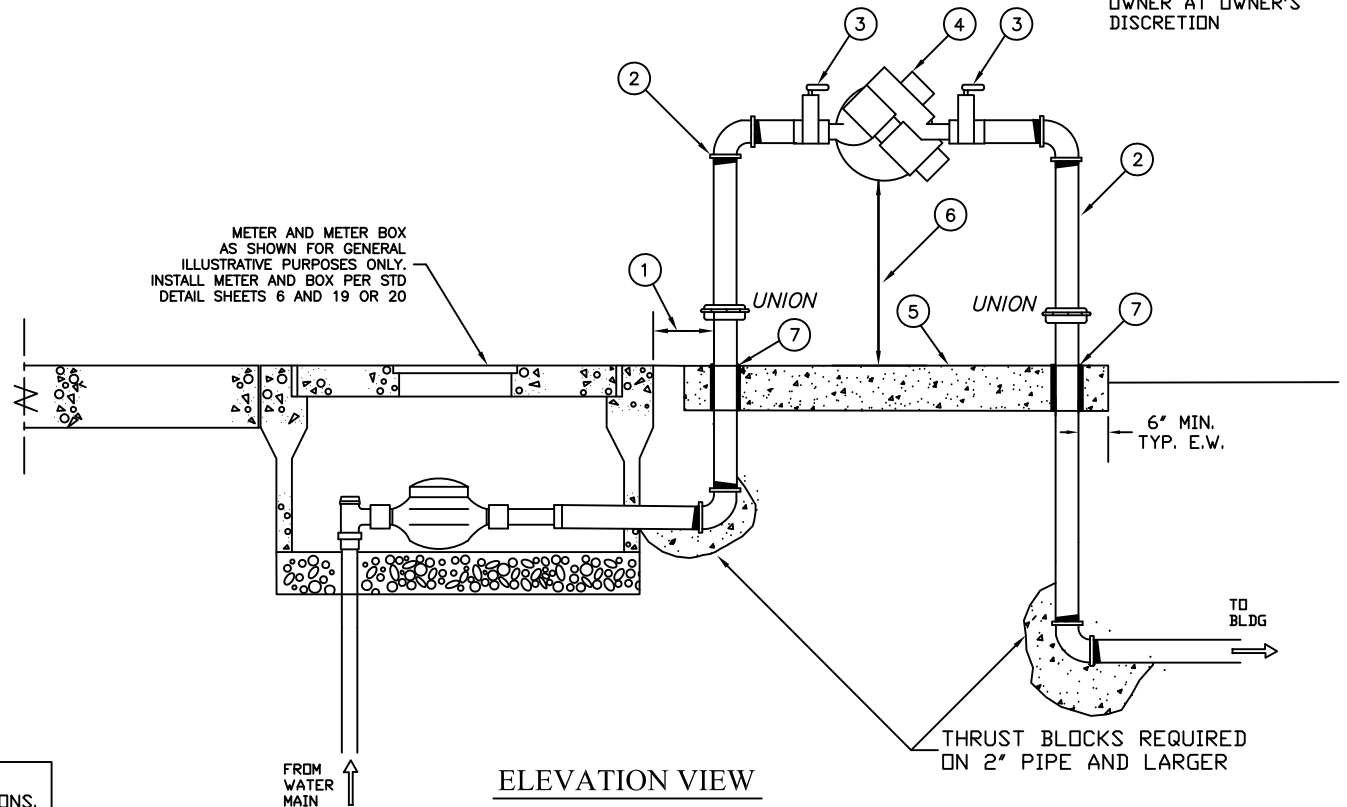
1. DISTANCE FROM METER BOX TO BACKFLOW DEVICE RISER SHALL BE 8-INCHES MAXIMUM UNLESS OTHERWISE APPROVED BY THE SJWD INSPECTOR OR AUTHORIZED SJWD REPRESENTATIVE. IN ALL CASES THERE SHALL NOT BE ANY TEES, OUTLETS OR CONNECTIONS BETWEEN THE METER AND THE BACKFLOW DEVICE.
2. ALL PIPING FROM METER TO BEYOND BACKFLOW DEVICE CONCRETE PAD SHALL BE TYPE "K" COPPER OR BRASS.
3. RESILIENT SEAT BALL VALVE
4. RPP BACKFLOW DEVICE (FEBCO LF825Y, WILKINS 975 XL2, OR DISTRICT APPROVED EQUIVALENT).
5. 4-INCH THICK CONCRETE PAD. LENGTH TO PROVIDE 6-IN BEYOND PIPING ON ALL SIDES.
6. 12-INCH MIN TO 20-INCH MAXIMUM CLEARANCE.
7. PROVIDE EXPANSION SLEEVES AROUND ALL PIPE PENETRATIONS THROUGH CONCRETE SLAB.
8. INSULATE ALL ABOVE GROUND PIPING WITH "WEATHERGUARD" INSULATION BLANKET OR DISTRICT APPROVED EQUIVALENT SUITED FOR EXPOSURE.
9. BACKFLOW PREVENTER TO BE TESTED BY A SAN JUAN WATER DISTRICT CERTIFIED TESTER AT TIME OF WATER SERVICE TURN ON.
10. BACKFLOW PREVENTER MAINTENANCE REPAIR AND REPLACEMENT SHALL BE THE RESPONSIBILITY OF THE CUSTOMER. ANNUAL TESTING SHALL BE THE RESPONSIBILITY OF THE DISTRICT UNLESS OTHERWISE INDICATED BY THE DISTRICT.



PLAN VIEW



NOTE - ANTI-THEFT SECURITY CAGE MAY BE INSTALLED BY OWNER AT OWNER'S DISCRETION



ELEVATION VIEW

NOTE - REFERENCE DETAIL SHEET 4 FOR ADDITIONAL INFORMATION ON RESIDENTIAL FIRE SERVICE INSTALLATIONS.

NO.	DATE	REVISIONS DESCRIPTION	APP	BY



1" & 2" REDUCED PRESSURE BACKFLOW PREVENTER INSTALLATION
SAN JUAN WATER DISTRICT

APPROVED (FOR SJWD)

ROB WATSON, P.E. ENGINEERING SERVICES MANAGER

SCALE: NTS PRINT DATE: 06/23/16 DETAIL NO: SHT 21 OF 27