

DOUGLAS BOULEVARD PIPELINE REPLACEMENT PROJECT

THE DETAILS: PHASE 1



Phase 1, Intersection of Douglas Blvd and AFR >

ALL ABOUT PHASE 1

SCHEDULE

Phase 1 is anticipated to be constructed from June 18 through the end of November 2018.

ANTICIPATED CONSTRUCTION

Moderate Impacts

Phase 1 will take place at the Douglas Blvd. and Auburn-Folsom Road intersection. Phase 1 will have the most impact to surrounding traffic and businesses. It will involve traffic delays and closure of one right-turn lane.

THE STATS

Installation of approximately 120 lineal feet of new 6-inch and 80 feet of new 8-inch diameter PVC pipe. The planned method of construction for Phase 1 is a trenchless method with limited excavation.



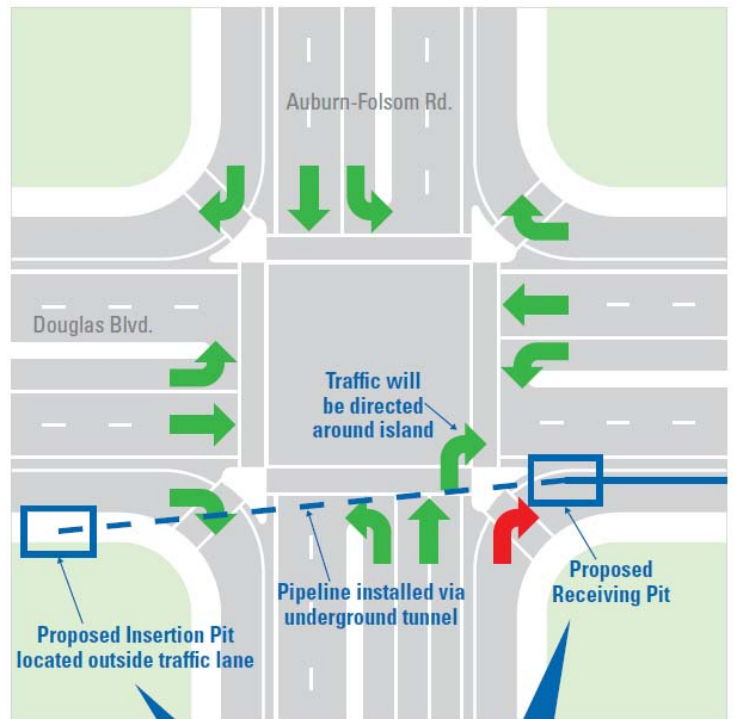
200
feet of pipe



TRENCHLESS TECHNOLOGY

We are using "pipe bursting" construction which involves receiving pits. This technology minimizes impacts since using open trench construction has major community impacts.

PHASE 1: WHAT TO EXPECT



Traffic Mitigation

The receiving pit locations were picked purposefully to help keep traffic impacts low and only cause the closure of the right-turn lane to north-bound traffic at Auburn-Folsom Road, turning east onto Douglas Blvd.

PHASES 2, 3 & 4

See www.sjwd.org for more details

@sanjuanwaterdistrict

@sanjuanwtrdist

sjwd.org

(916) 791-6952

