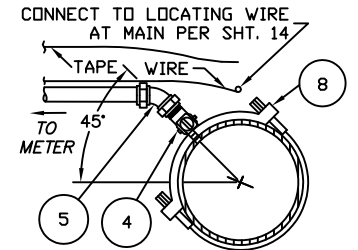
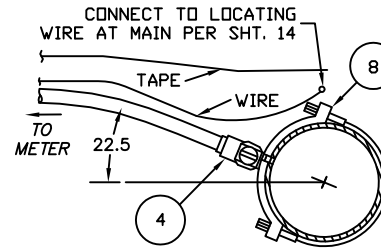
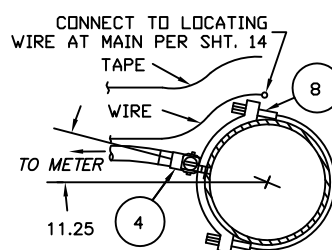
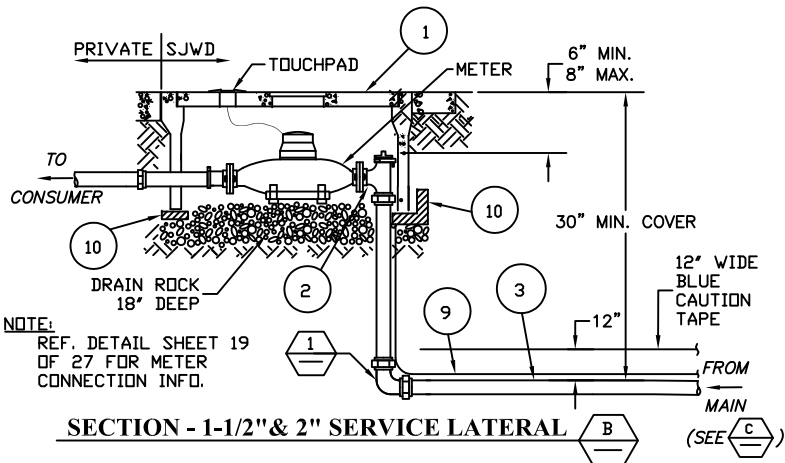
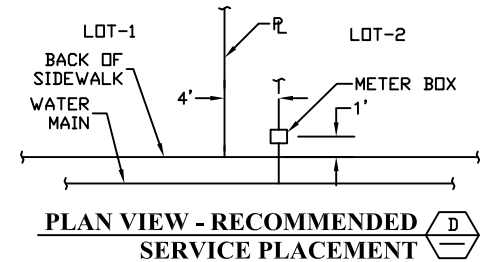
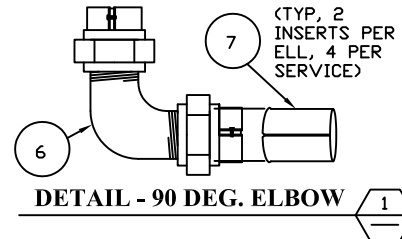
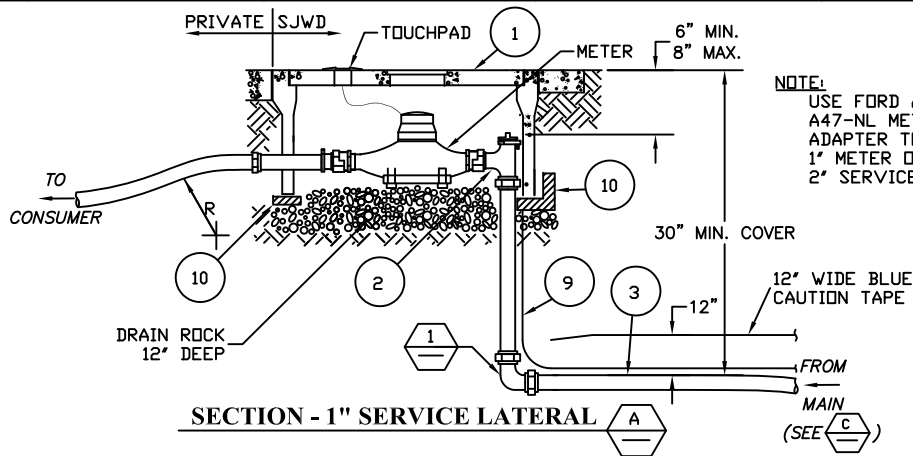


SERVICE MATERIALS DESCRIPTION AND PARTS/MODEL NUMBERS

	1" SERVICE	1-1/2" SERVICE	2" SERVICE
1 METER BOX (REF. NOTE 12)	B-16 BOX W/B-16GP LID AND PW/TRPL PLUG	B-36 BOX W/N36RP LID FOR NON-TRAFFIC AREAS, OR G-45GP LID AND PW/TRPL PLUG FOR TRAFFIC AREAS	B-36 BOX W/N36RP LID FOR NON-TRAFFIC AREAS, OR G-70GP LID AND PW/TRPL PLUG FOR TRAFFIC AREAS
2 ANGLE METER VALVE	FORD BA63-444W-NL	FORD BFA43-666W-NL	FORD BFA43-777W-NL
3 SERVICE LINE	1" POLYETHYLENE TUBE, IPS	1-1/2" POLYETHYLENE TUBE, CTS	2" POLYETHYLENE TUBE, CTS
4 CORP. STOP	FB1101-4-NL (USE FB900 W/ 45 DEG.)	FB1100-6-NL (USE FB900 W/ 45 DEG.)	FB1100-7-NL (USE FG900 W/ 45 DEG.)
5 45 DEG. ELBOW	FORD LA14-54-NL	FORD LA14-76-NL	FORD LA14-87-NL
6 90 DEG. ELBOW (REQUIRED)	FORD L66-44-NL	FORD L44-66-NL	FORD L44-77-NL
7 INSERT STIFFENERS	FORD 53-72	FORD 54	FORD 55
8 SERVICE SADDLE (FOR ALL SIZES)	DIP, ACP, & STL - JONES 979 C-900 PVC - JONES 996	DIP, ACP, & STL - JONES 979 C-900 PVC - JONES 996	DIP, ACP, & STL - JONES 979 C-900 PVC - JONES 996
9 LOCATING WIRE	10 GA COPPER (INSULATED)	10 GA COPPER (INSULATED)	10 GA COPPER (INSULATED)
10 CONC. OR BRICK BLOCKING	2" X 4"	2" X 4"	2" X 4"

NOTES:

1. THE MANUFACTURER AND MODEL NUMBER LISTED IN THE SCHEDULE OF MATERIALS IS FOR CONVENIENCE IN DESIGNATION, SUBSTITUTION MAY BE MADE WITH THE PRIOR APPROVAL OF THE DISTRICT.
2. FOR CONNECTION TO MAIN SEE DISTRIBUTION MAIN SERVICE CONNECTIONS - 1' THROUGH 2' DETAIL, SHEET 7.
3. SET METER BOX PERPENDICULAR TO STREET AND ELEVATION FLUSH WITH LOT FINISH GRADE. LOCATE BOX 1 FOOT FROM BACK OF SIDEWALK. SEE RECOMMENDED PLACEMENT PLAN FIGURE (D), GRADE AREA TO DRAIN AWAY FROM BOX.
4. USE INSERT STIFFENER, ITEM 6 IN SCHEDULE OF MATERIALS, FOR EACH PACK JOINT.
5. SADDLES TO BE INSTALLED MIN. 18' FROM PIPE COUPLING OR ADJACENT SADDLES.
6. PIPE TRENCHING DETAILS SEE SHEET 11 (SAND BACK FILL MATERIAL IS REQUIRED).
7. MINIMUM RADIUS (R) OF PIPE/LINE TO BE 2X PIPE MANUFACTURER'S RECOMMENDATIONS.
8. ALL COMMERCIAL SERVICES TO BE PLACED IN PLANTER AREAS. LANDSCAPING SHALL NOT BLOCK EASY VISIBILITY OR ACCESS TO METER BOX. LANDSCAPING (SHRUBS) SHALL NOT BE PLACED CLOSER THAN 3-FT FROM METER BOX; TREES NO CLOSER THAN 10-FT TO BOX.
9. 90° ELBOW (MATERIAL ITEM 5) SHALL BE WRAPPED TIGHTLY WITH 3-MIL TAPE.
10. COMMERCIAL SERVICES SHALL HAVE ADDRESS ON LID WITH 4-IN TALL WHITE THERMAL LETTERING OR ENGRAVED METAL TAG
11. SEE SHEETS 18, 19, AND 20 FOR ADDITIONAL INFORMATION ON SETTING METER BOX, INSTALLING METER AND TONING WIRE.
12. TRAFFIC OR HEAVY LOAD (H/20) RATED BOXES AND/OR LIDS MAY BE REQUIRED FOR SOME LOCATIONS (WHEN DIRECTED FOR BY DISTRICT).



NOTE - SERVICE CONNECTION TAP ANGLE TO BE CONFIRMED WITH SJWD PRIOR TO INSTALLATION

SECTION - SERVICE CONN. TAP INSTALLATIONS AT MAIN (C)

NO	DATE	REVISIONS	APP	BY



1", 1-1/2" & 2" SINGLE SERVICE LATERAL ASSEMBLY
SAN JUAN WATER DISTRICT

APPROVED

SCALE: NTS PRINT DATE: 08/29/13 DETAIL NO: SHT 6 OF 27