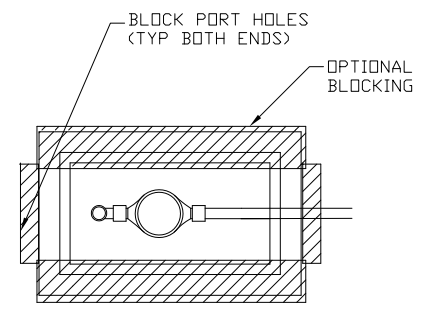


← DISTRICT MAINTENANCE RESPONSIBILITY | CUSTOMER MAINTENANCE RESPONSIBILITY →

NOTES:

- | | | |
|---|---|---|
| <ol style="list-style-type: none"> 1. 3-IN SEPARATION FROM BACK OF BOX. METER FACE MUST BE EASILY READABLE THRU METAL PORT. 2. 1-IN ANGLE METER VALVE. 3. SENSUS SR II TR/PL TOUCH READ METER. 4. *8-1/2 INCH BRASS METER SPUD 5. CHRISTY B-16 BOX WITH B-16GP LID. 6. BOX MUST BE SET FLUSH WITH FINAL LOT GRADE AND CLEAR OF OBSTRUCTIONS, INCLUDING DRIVEWAYS. CONTACT DISTRICT WHERE CONFLICTS EXIST. | <ol style="list-style-type: none"> 7. SCH. 80 PVC ADAPTER (MIPxSLIP). 8. #10 GAUGE INSULATED COPPER TONING WIRE. 18" TO BE LEFT IN SERVICE BOX. STRIP 6" OF INSULATION OFF FROM END OF WIRE. 9. CUSTOMER LINE SIZE 3/4-IN OR GREATER. 10. 2"x4" AND 2"x6" CONG. OR BRICK BLOCKING TO SUPPORT BOX AND METER SPUD. BLOCKS ARE TO BE PLACED LENGTH WISE OR ON ENDS AND COVERING PORT HOLES. 11. DAMAGED BOX OR LID (#6) SHALL BE REPLACED BY THE CONTRACTOR PRIOR TO WATER TURN ON. | <ol style="list-style-type: none"> 12. 3/4 INCH SCREENED DRAIN ROCK 12-IN DEEP. 13. 1-IN BRASS (FIPx FIP) COUPLER 14. MAINTAIN A MIN. 2' HORIZONTAL CLEARANCE FROM SERVICE BOX PERIMETER FOLLOWING INSTALLATION OF THE METER. 15. SEE SENSUS INSTALLATION DETAIL SHEET FOR TOUCH READ PAD INSTALLATION INSTRUCTIONS. <p>* SUPPLIED BY DISTRICT (NEW DEVELOPMENT ONLY)</p> |
|---|---|---|



BLOCKING DETAIL

NO	DATE	REVISIONS	APP	BY



STANDARD 1" METER CONNECTION

SAN JUAN WATER DISTRICT

APPROVED		

SCALE: NTS	PRINT DATE: 04/17/07	DETAIL NO: SHT 18 OF 27