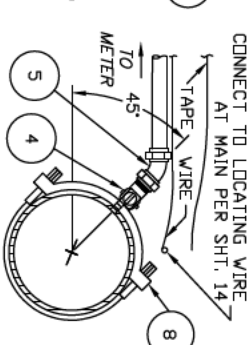
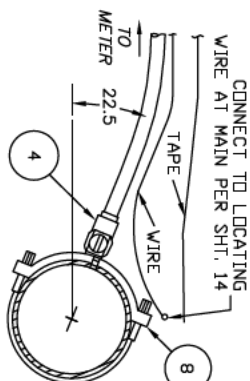
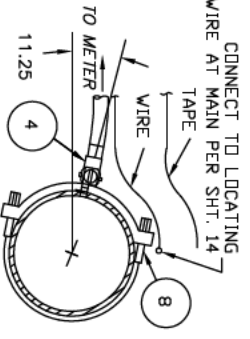
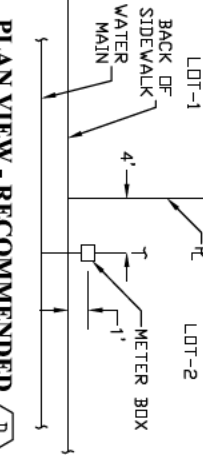
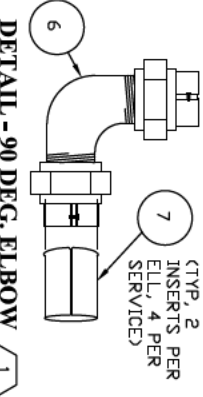
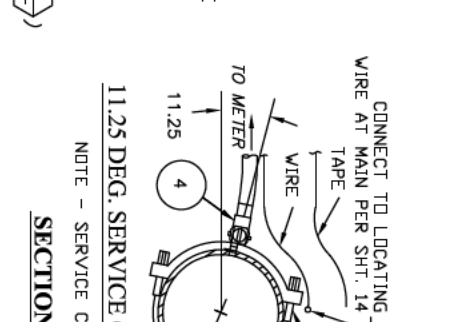
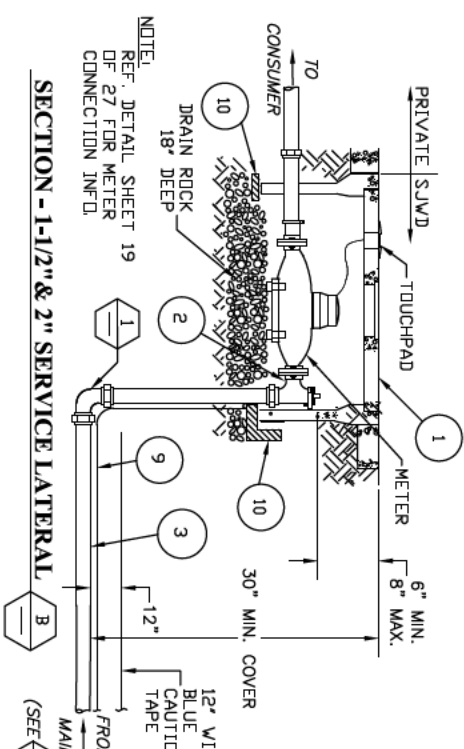
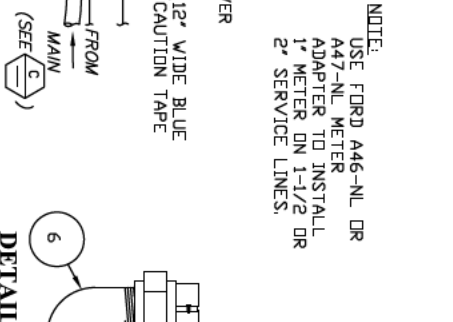
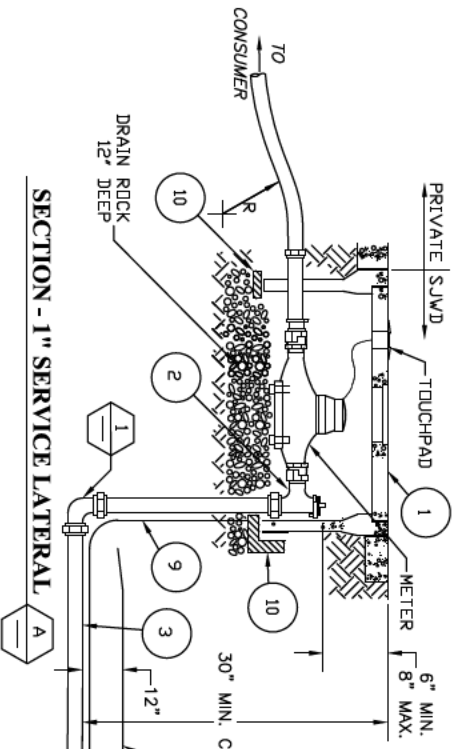


SERVICE MATERIALS DESCRIPTION AND PARTS/MODEL NUMBERS

	1" SERVICE	1-1/2" SERVICE	2" SERVICE
1	METER BOX (REF. NOTE 12)	B-16 BOX W/B-16GP LID AND PW/TRPL PLUG	B-36 BOX W/G-45GP LID AND PW/TRPL PLUG
2	ANGLE METER VALVE	FORD K163-444W	FORD FV43-666W
3	SERVICE LINE	1" POLYETHYLENE TUBE, IPS	1-1/2" POLYETHYLENE TUBE, CTS
4	COOP. STOP	FBI101 (USE FB900 W/ 45 DEG.)	FBI100 (USE FB900 W/ 45 DEG.)
5	45 DEG. ELBOW	FORD L414-54	FORD L414-76
6	90 DEG. ELBOW (REQUIRED)	FORD L66-44	FORD L44-66
7	INSERT STIFFENERS	FORD S2	FORD S4
8	SERVICE SADDLE (FOR ALL SIZES)	DIP, ACP & STL - JONES 979 C-900 PVC - JONES 996	DIP, ACP & STL - JONES 979 C-900 PVC - JONES 996
9	LOCATING WIRE	10 GA COPPER (INSULATED)	10 GA COPPER (INSULATED)
10	CONC. OR BRICK BLOCKING	2" X 4"	2" X 4"



- NOTES:
- THE MANUFACTURER AND MODEL NUMBER LISTED IN THE SCHEDULE OF MATERIALS IS FOR CONVENIENCE IN DESIGNATION, SUBSTITUTION MAY BE MADE WITH THE PRIOR APPROVAL OF THE DISTRICT.
  - FOR CONNECTION TO MAIN SEE DISTRIBUTION MAIN SERVICE CONNECTIONS - 1" THROUGH 2" DETAIL, SHEET 7.
  - SET METER BOX PERPENDICULAR TO STREET AND FLUSH WITH LOT FINISH GRADE. LOCATE BOX 1 FOOT FROM BACK OF SIDEWALK. SEE RECOMMENDED PLACEMENT PLAN FIGURE (B).
  - USE INSERT STIFFENER, ITEM 6 IN SCHEDULE OF MATERIALS, FOR EACH PACK JOINT.
  - SADDLES TO BE INSTALLED MIN. 18" FROM PIPE CUPPLING OR ADJACENT SADDLES.
  - PIPE TRENCHING DETAILS SEE SHEET 11 (SAND BACK FILL MATERIAL IS REQUIRED).
  - MINIMUM RADIUS (R) OF PIPE TO BE EX PIPE MANUFACTURER'S RECOMMENDATIONS.
  - ALL COMMERCIAL SERVICES TO BE PLACED IN PLANTER AREAS. LANDSCAPING SHALL NOT BLOCK EASY VISIBILITY OR ACCESS TO METER BOX. LANDSCAPING (SHRUBS) SHALL NOT BE PLACED CLOSER THAN 3-FT FROM METER BOX; TREES NO CLOSER THAN 10-FT TO BOX.
  - 90° ELBOW (MATERIAL ITEM 5) SHALL BE WRAPPED TIGHTLY WITH 3-MIL TAPE.
  - COMMERCIAL SERVICES SHALL HAVE ADDRESS ON LID WITH 4-IN TALL WHITE THERMAL LETTERING OR ENGRAVED METAL TAG
  - SEE SHEETS 18, 19, AND 20 FOR ADDITIONAL INFORMATION ON SETTING METER BOX, INSTALLING METER AND TONING WIRE.
  - TRAFFIC OR HEAVY LOAD (H/20) RATED BOXES AND/OR LIDS MAY BE REQUIRED FOR SOME LOCATIONS (WHEN DIRECTED FOR BY DISTRICT).

1", 1-1/2" & 2" SINGLE SERVICE LATERAL ASSEMBLY

NO.	DATE	REVISIONS	APP	BY



SAN JUAN WATER DISTRICT

APPROVED  
SCALE: \_\_\_\_\_  
PRINT DATE: 02/04/13  
DETAIL NO. SHIT 6 OF 27