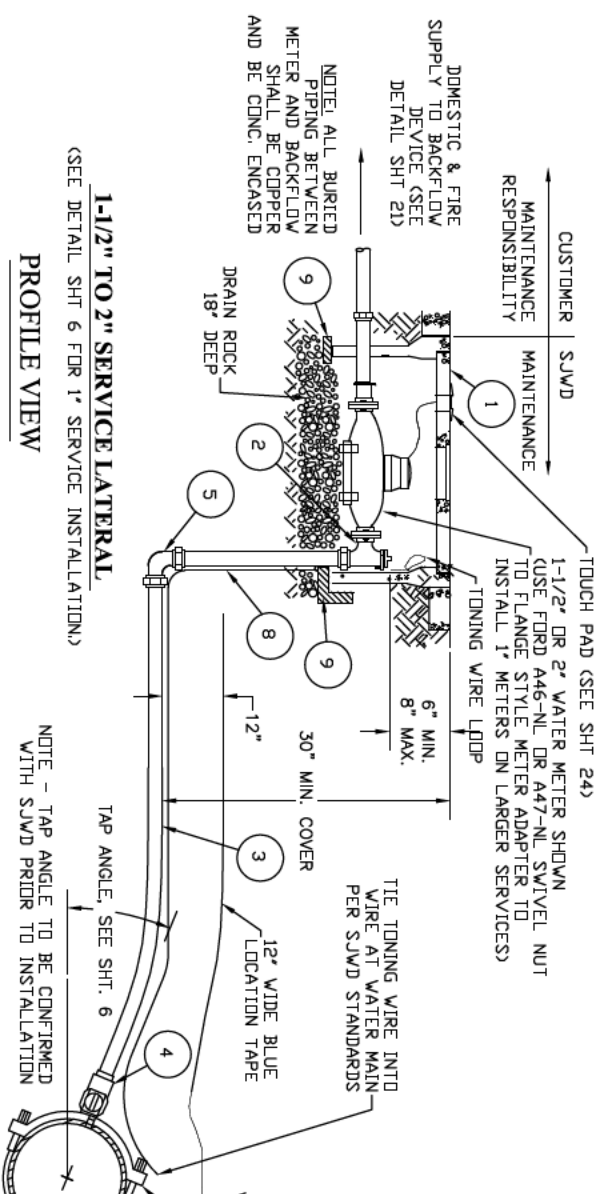


SERVICE MATERIALS DESCRIPTION AND PARTS/MODEL NUMBERS

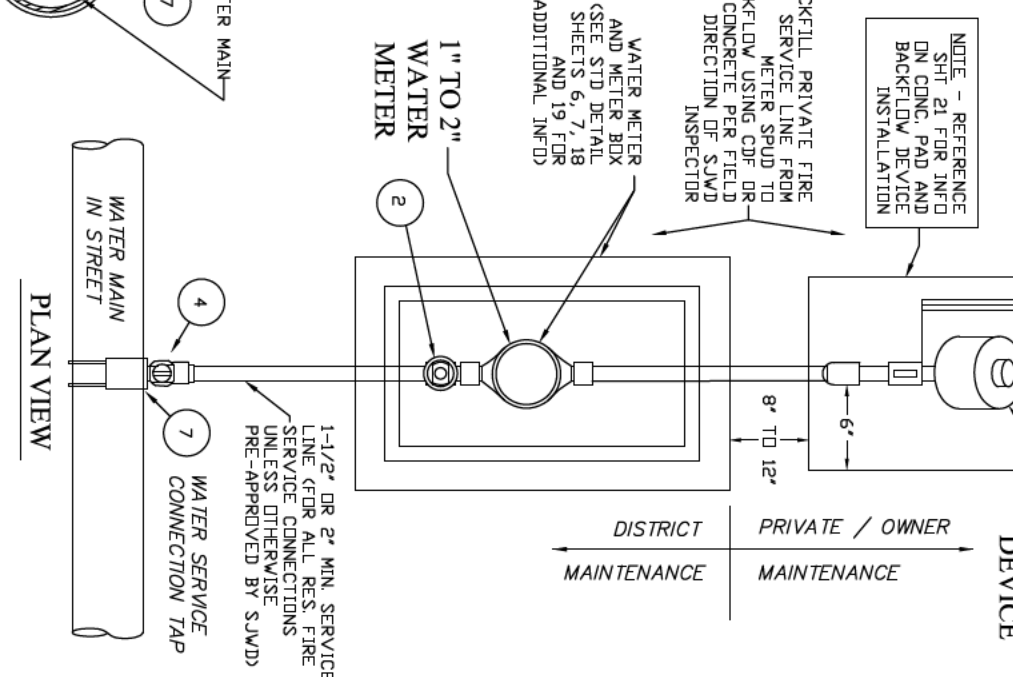
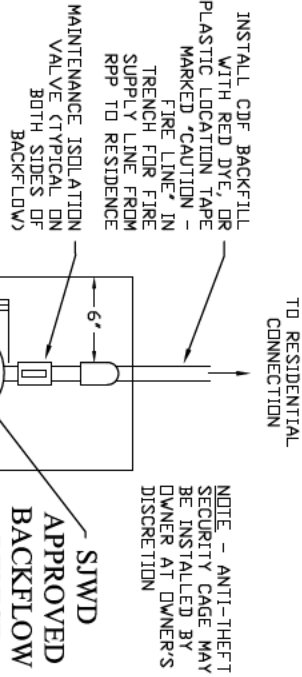
1	METER BOX	1" METER B-16 BOX W/B-16GP LID AND PW/TRPL PLUG	1-1/2" METER B-36 BOX W/G-70GP LID AND PW/TRPL PLUG	2" METER B-36 BOX W/G-70GP LID AND PW/TRPL PLUG
2	ANGLE METER VALVE	1" - FORD KV63-444W 1-1/2" - FORD FV 43-666W	FORD FV 43-666W	FORD FV43-777W
3	SERVICE LINE (SIZE AS DIRECTED BY SJWD)	1" POLYETHYLENE TUBE, JPS 1-1/2" POLYETHYLENE TUBE, CTS	1-1/2" POLYETHYLENE TUBE, CTS 2" POLYETHYLENE TUBE, CTS	2" POLYETHYLENE TUBE, CTS
4	CORP. STOP	1" - F-FB101 1-1/2" - FB 1100	FB 1100	FB 1100
5	ELL (REQUIRED)	1" - FORD L66-44 1-1/2" - FORD L44-66	FORD L44-66	FORD L44-77
6	INSERT (STIFFENER, USE AT EACH)	1" - FORD 52 1-1/2" - FORD 54	FORD 54	FORD 55
7	SERVICE SADDLE (FOR ALL SIZES)	DIP - ACP & STL - JONES 979 C-900 PVC - JONES 996	DIP - JONES 979 C-900 - JONES 996 OR EQUIV.	DIP - JONES 979 C-900 - JONES 996 OR EQUIV.
8	LOCATING WIRE	10 GA COPPER (INSULATED)	10 GA COPPER (INSULATED)	10 GA COPPER (INSULATED)
9	CONC. OR BRICK BLOCKING	2" x 4" (LENGTH AS REQD)	2" x 4" (LENGTH AS REQD)	2" x 4" (LENGTH AS REQD)

- NOTES:
- BACKFLOW PREVENTION DEVICES (TYPE RPP TYPE UNLESS OTHERWISE ALLOWED BY SJWD ENGINEERING) SHALL BE SJWD APPROVED (WALKINS 975 XL, OR FEBCO BESSY). DOUBLE CHECK TYPE MAY BE ALLOWED WITH SJWD ENGINEERING APPROVAL ON A SPECIAL CASE REVIEW BASIS (WALKINS 350XL, FEBCO LF850, WATT'S LF007).
  - COLD WEATHER INSULATED COVERS SHALL BE PROVIDED BY OWNER FOR ALL BACKFLOW DEVICES.
  - INSTALLATIONS REQUIRING A DOMESTIC METER LARGER THAN 1-IN SHALL BE PRE-APPROVED BY SJWD ON A CASE-BY-CASE BASIS.
  - PROVIDE DOMESTIC, IRRIGATION AND FIRE DEMAND CALCULATIONS FOR SJWD REVIEW FOR ALL PROJECTS.
  - BOLLARDS MAY BE REQUIRED TO PROTECT BACKFLOW DEVICE IN TRAFFIC HAZARD AREAS.
  - BACKFLOW PREVENTION DEVICES SHALL BE TESTED ANNUALLY BY A SJWD APPROVED, STATE CERTIFIED BACKFLOW EQUIPMENT TESTER. PROPERTY OWNER SHALL REMAIN RESPONSIBLE FOR ALL BACKFLOW DEVICE MAINTENANCE, REPAIRS AND/OR REPLACEMENT.
  - CONNECTIONS WITH ON-SITE BOOSTER PUMPS WHEN APPROVED BY SJWD SHALL INCORPORATE A PRESSURE SUSTAINING CONTROL VALVE TO ENSURE THE PUBLIC WATER SUPPLY DOES NOT DROP BELOW 20 PSI. SUBMIT PUMP SYSTEM DESIGN TO SJWD ENGINEER FOR PRE-APPROVAL BEFORE INSTALLATION.
  - METER MANUFACTURER, TYPE AND MODEL TO BE DETERMINED BY SJWD ENGINEER.



1-1/2" TO 2" SERVICE LATERAL  
(SEE DETAIL SHT 6 FOR 1" SERVICE INSTALLATION)  
PROFILE VIEW

NOTE - TAP ANGLE TO BE CONFIRMED WITH SJWD PRIOR TO INSTALLATION



PLAN VIEW

**1", 1-1/2" & 2" RESIDENTIAL FIRE SERVICE INSTALLATION**  
SAN JUAN WATER DISTRICT

APPROVED \_\_\_\_\_

SCALE: \_\_\_\_\_ PRINT DATE: 02/04/13 DETAIL NO: SHT 4 OF 27

NO. DATE REVISIONS APP BY

SINCE 1884  
SJWD ENGINEERING DEPT