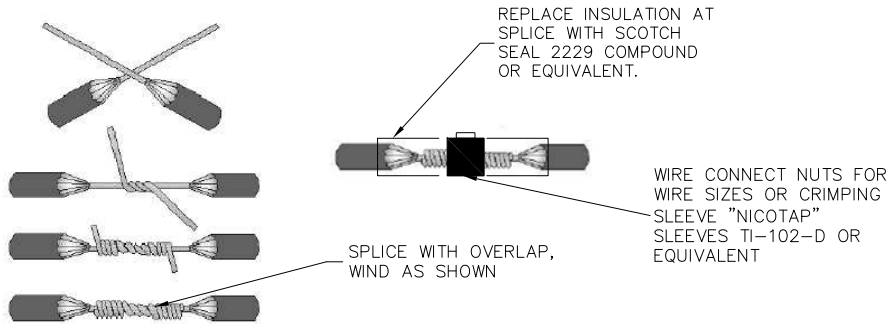
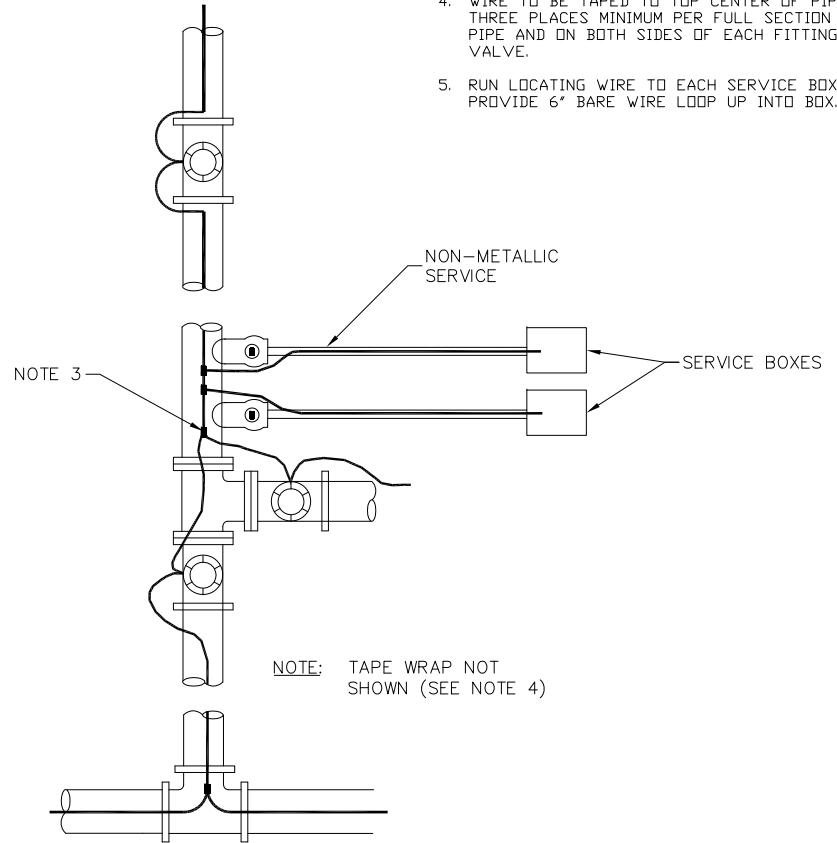


**VALVE  
DETAIL**



**SPLICE  
DETAIL**



**TYPICAL  
LAYOUT**

**NOTES:**

1. WIRE TO BE CONTINUOUS BETWEEN VALVE BOXES EXCEPT AS NOTED.
2. A 6" LOOP SHALL BE LOCATED IN ALL VALVE BOXES AND POSITIONED SO IT WILL NOT BE DISTURBED BY NORMAL VALVE OPERATION.
3. SPLICE WIRE AS PER DETAIL THIS SHEET.
4. WIRE TO BE TAPED TO TOP CENTER OF PIPE, THREE PLACES MINIMUM PER FULL SECTION OF PIPE AND ON BOTH SIDES OF EACH FITTING OR VALVE.
5. RUN LOCATING WIRE TO EACH SERVICE BOX AND PROVIDE 6" BARE WIRE LOOP UP INTO BOX.

NO	DATE	REVISIONS	APP	BY



**LOCATING WIRE FOR  
NON-METALLIC PIPE  
SAN JUAN WATER DISTRICT**

APPROVED

SCALE: NTS PRINT DATE: 04/17/07 DETAIL NO: SHT 14 OF 27