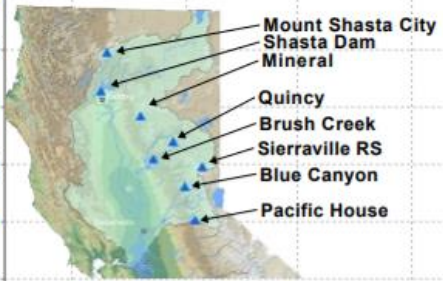
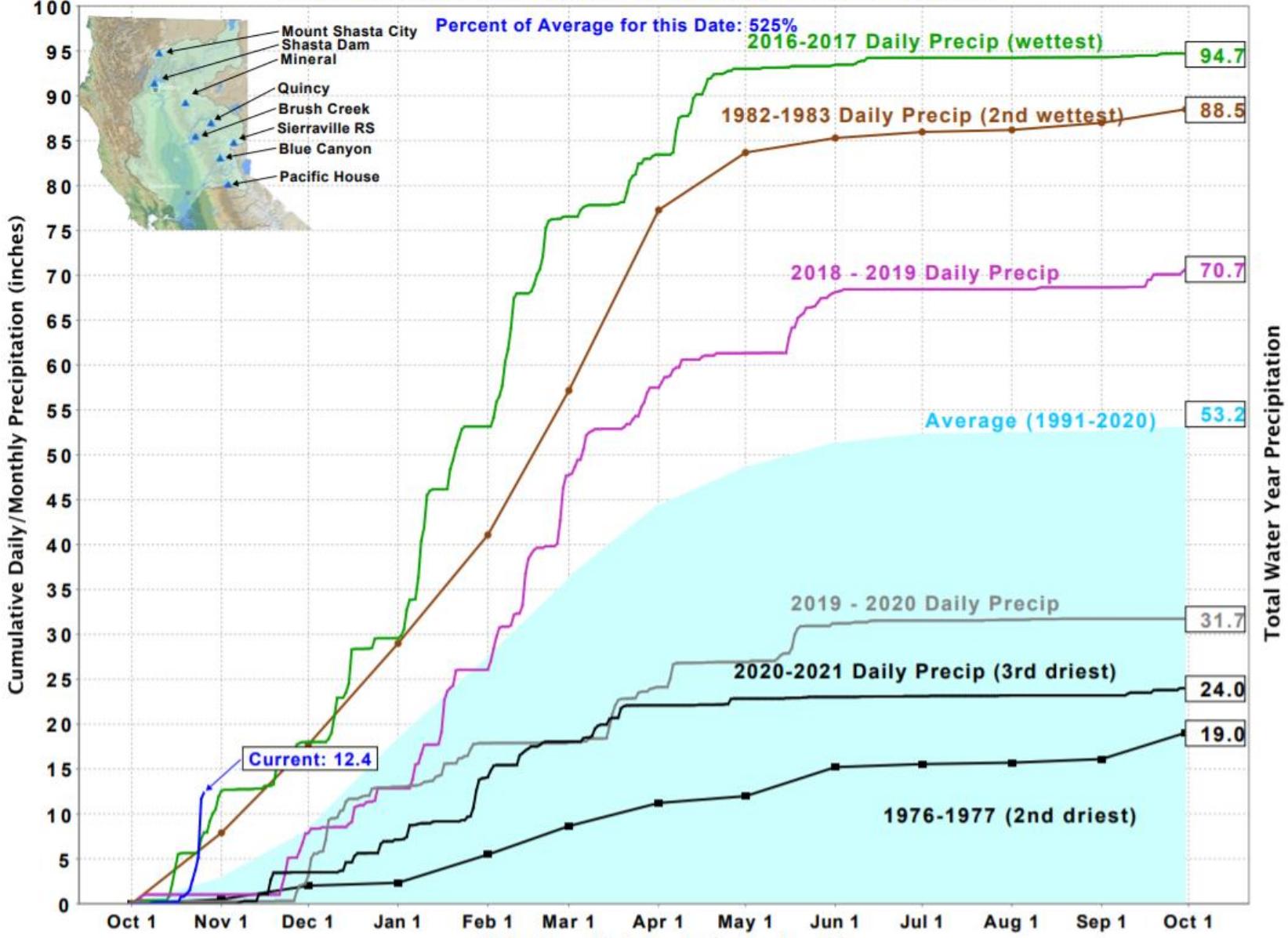
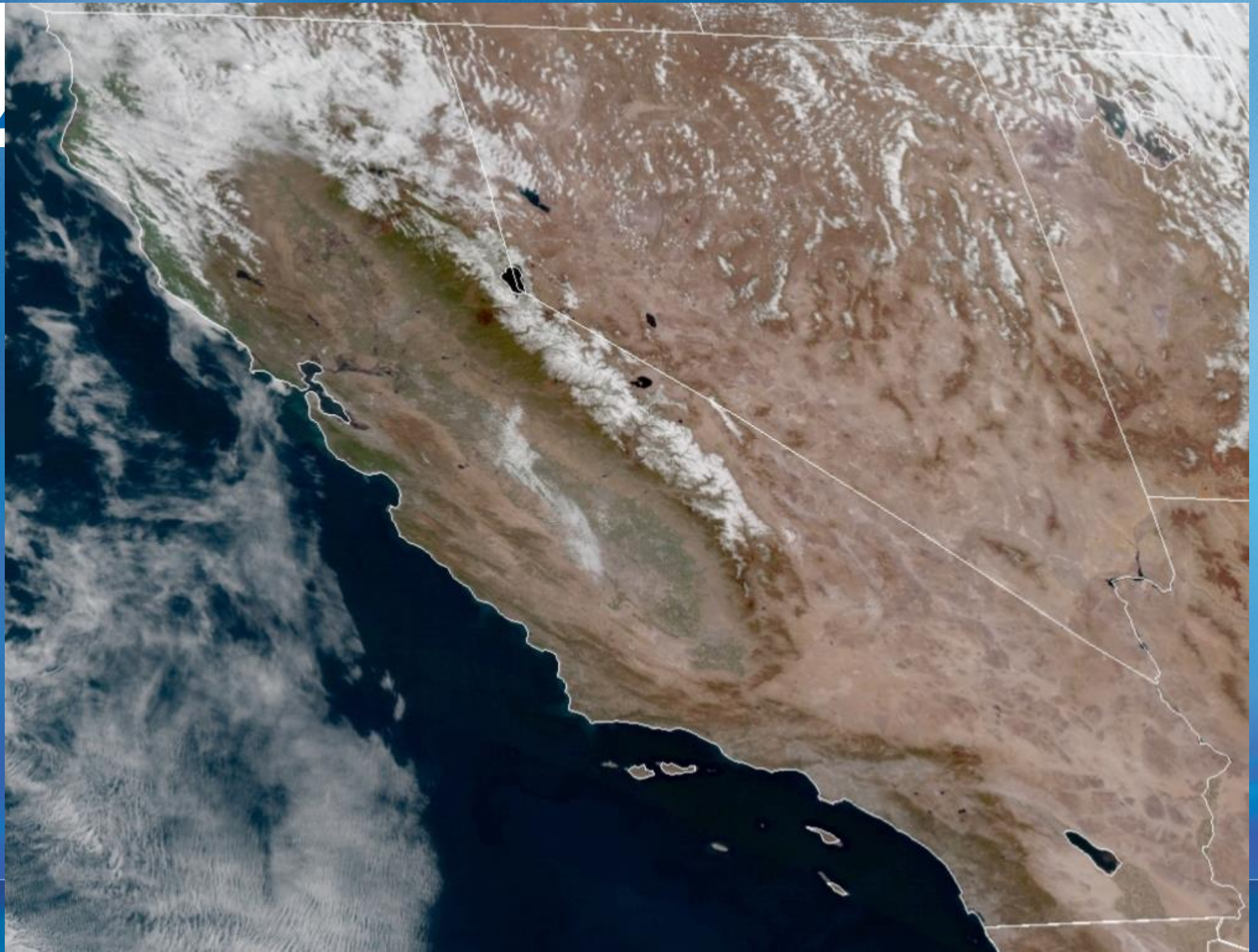


### Northern Sierra Precipitation: 8-Station Index, October 26, 2021



Total Water Year Precipitation



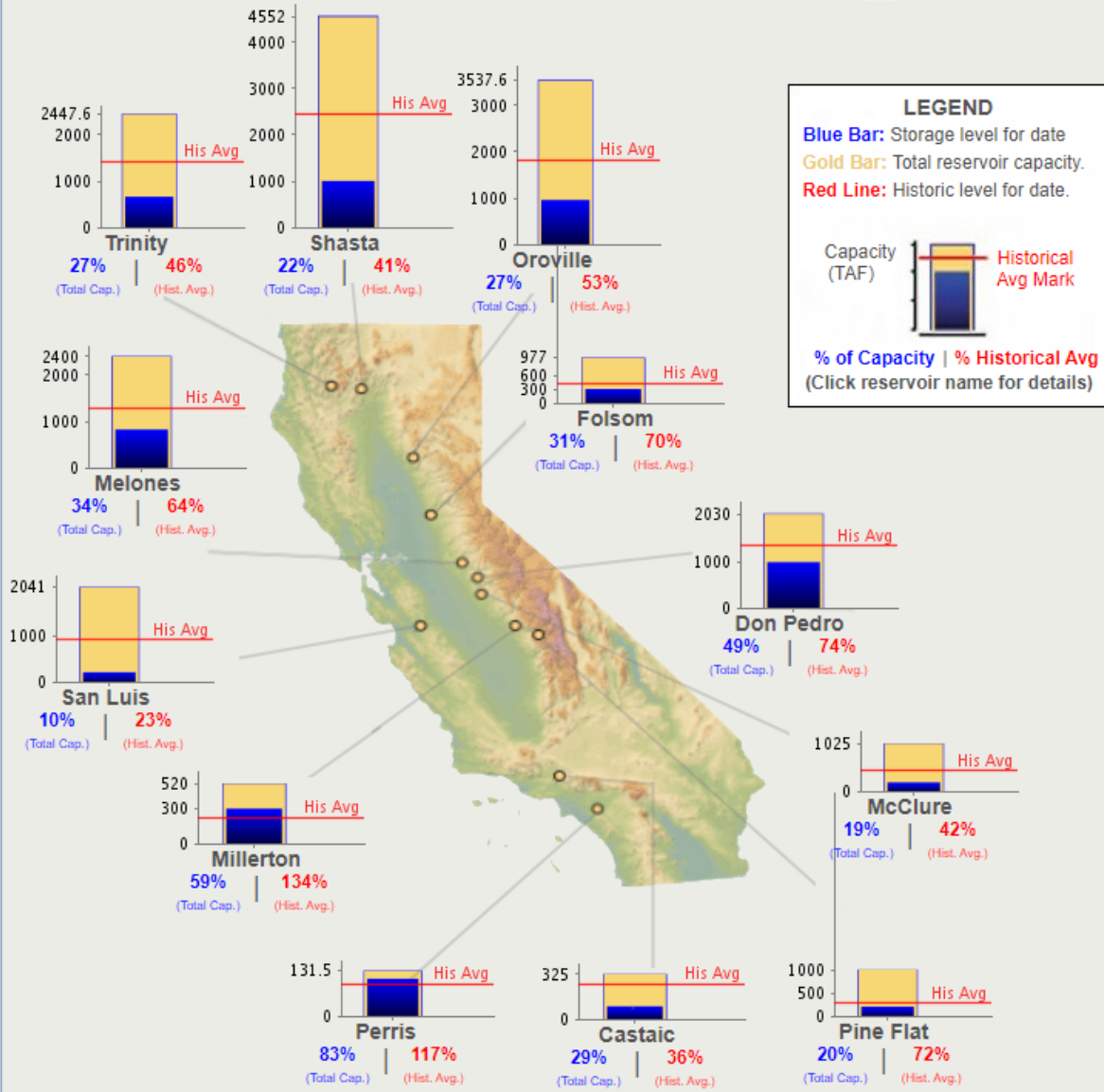




**CURRENT CONDITIONS FOR MAJOR RESERVOIRS: 26-OCT-2021**

Midnight: 26-Oct-2021

Change Date: 26-Oct-2021



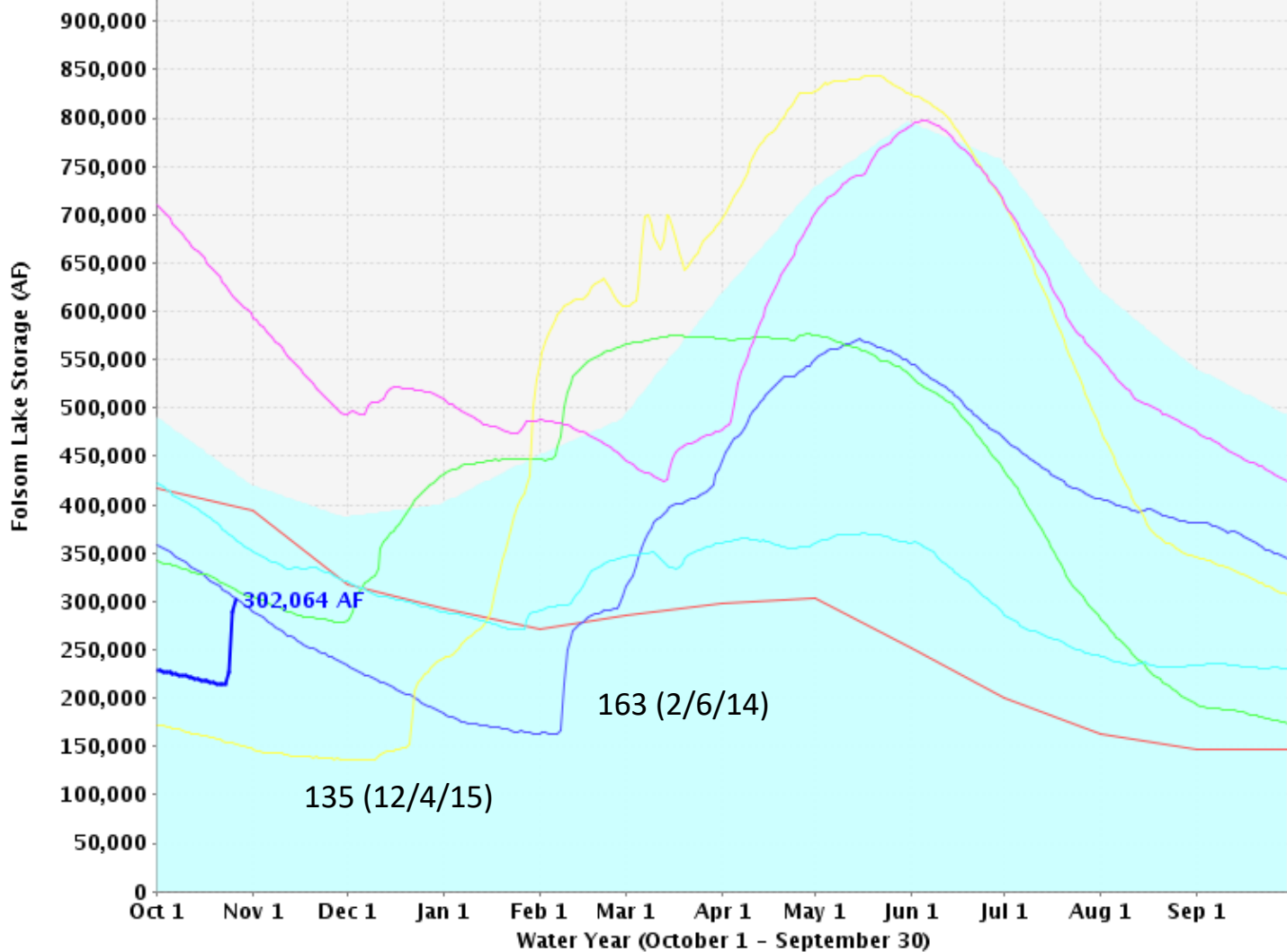
[Click for printable version of current data.](#)

Report Generated: 27-Oct-2021 5:51 AM



# Folsom Lake Storage Levels

Total Reservoir Capacity: 977,000 AF



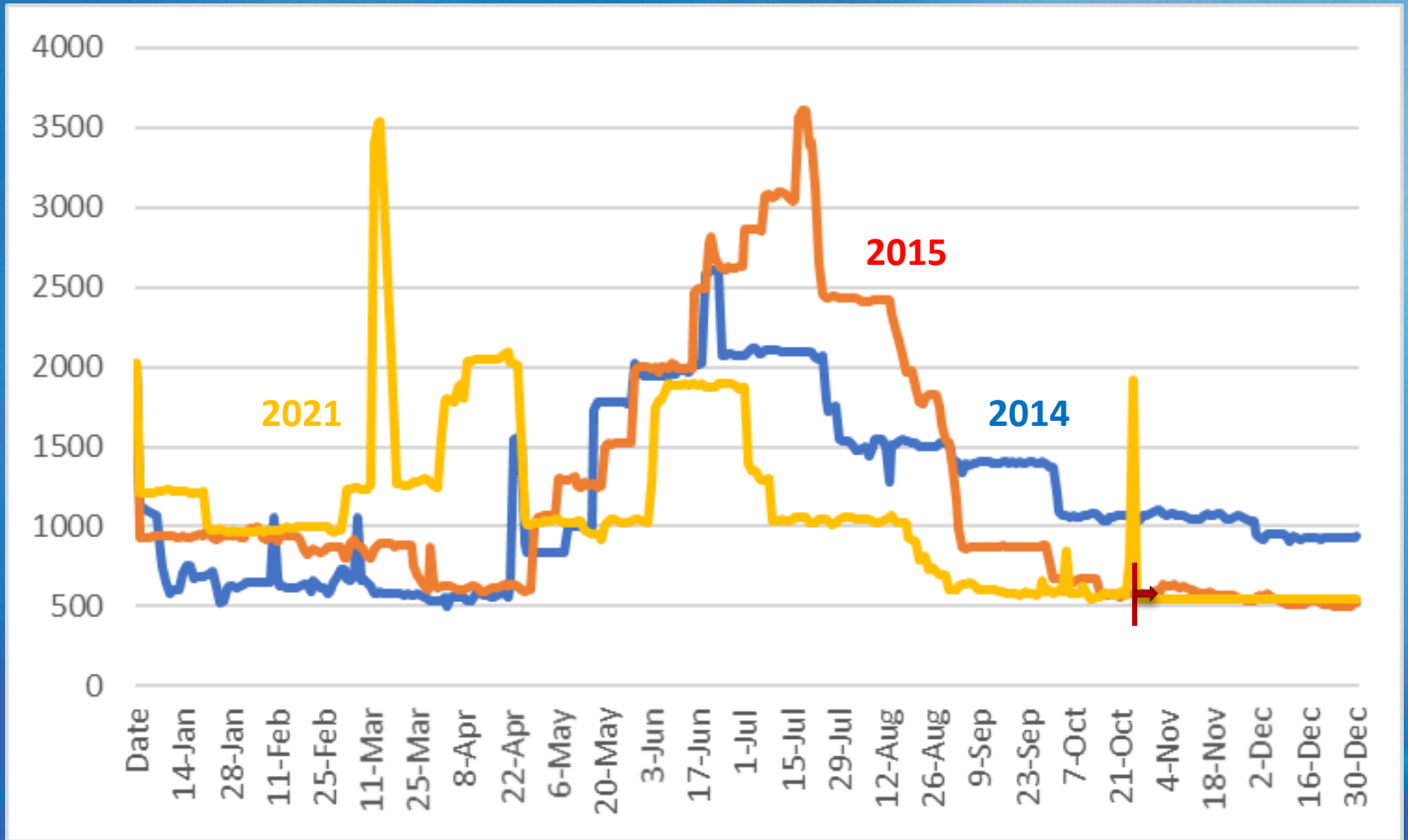
9/30  
Storage  
(TAF):

- 423 (2020)
- 342 (2014)
- 304 (2016)
- 228 (2021)
- 173 (2015)
- 147 (1977)

■ Historical Average   
 ■ Total Reservoir Capacity   
 ■ 1976-1977 (dry)   
 ■ 2013-2014   
 ■ 2014-2015   
 ■ 2015-2016   
 ■ 2019-2020   
 ■ 2020-2021   
 ■ 2021-2022(current)



# Folsom (Natoma) Releases (cfs)





# DWR/Reclamation Forecasts

## October 21, 2021

### September

<b>Storages</b>							
<b>Federal End of the Month Storage/Elevation (TAF/Feet)</b>							
			<b>Sep</b>	<b>Oct</b>	<b>Nov</b>	<b>Dec</b>	<b>Jan</b>
Folsom	244		248	226	207	196	225
	Elev.		377	373	369	366	373
<b>Monthly River Releases (TAF/cfs)</b>							
American	TAF		33	34	33	34	34
	cfs		550	550	550	550	550

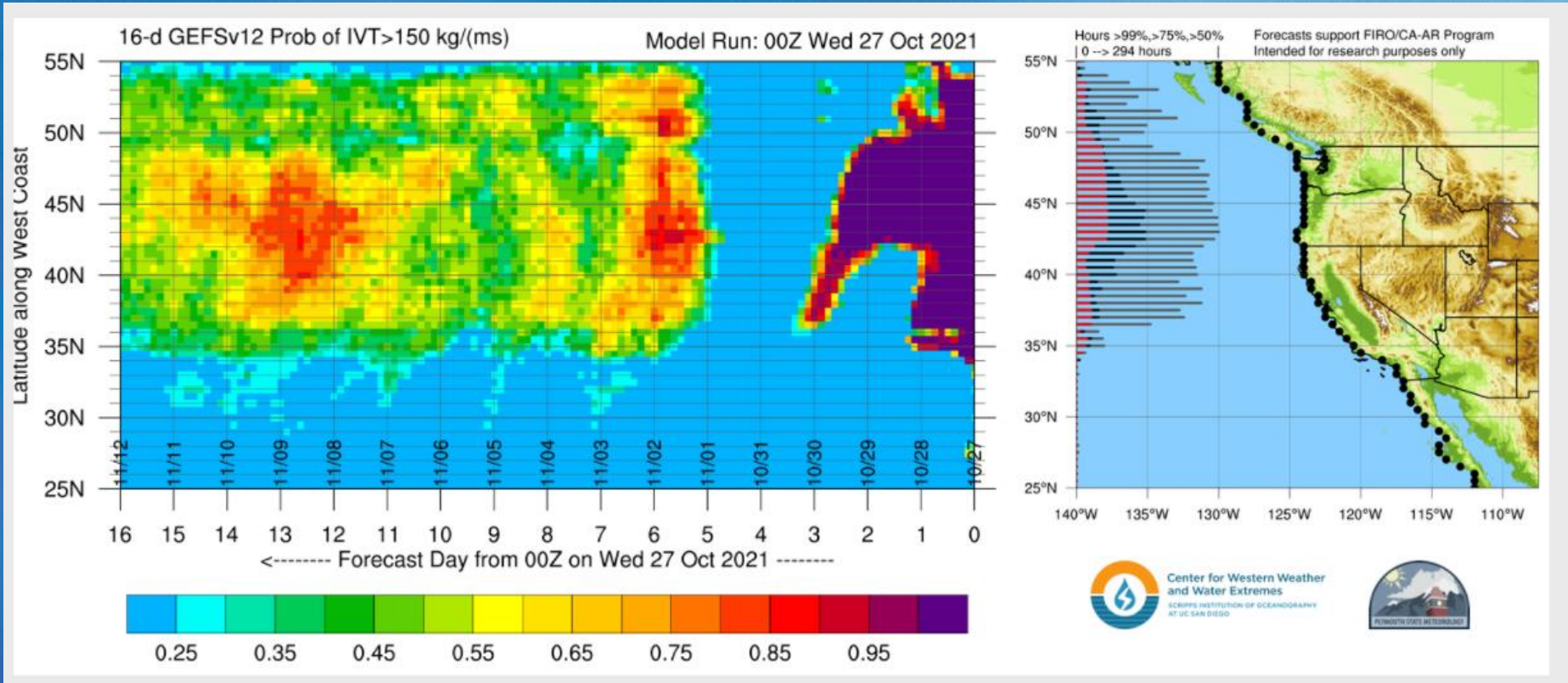
### October

<b>Storages</b>							
<b>Federal End of the Month Storage/Elevation (TAF/Feet)</b>							
			<b>Oct</b>	<b>Nov</b>	<b>Dec</b>	<b>Jan</b>	<b>Feb</b>
Folsom	230		208	188	178	207	280
	Elev.		369	364	361	369	384
<b>Monthly River Releases (TAF/cfs)</b>							
American	TAF		34	33	34	34	31
	cfs		550	550	553	550	550





# Center for Western Weather and Water Extremes

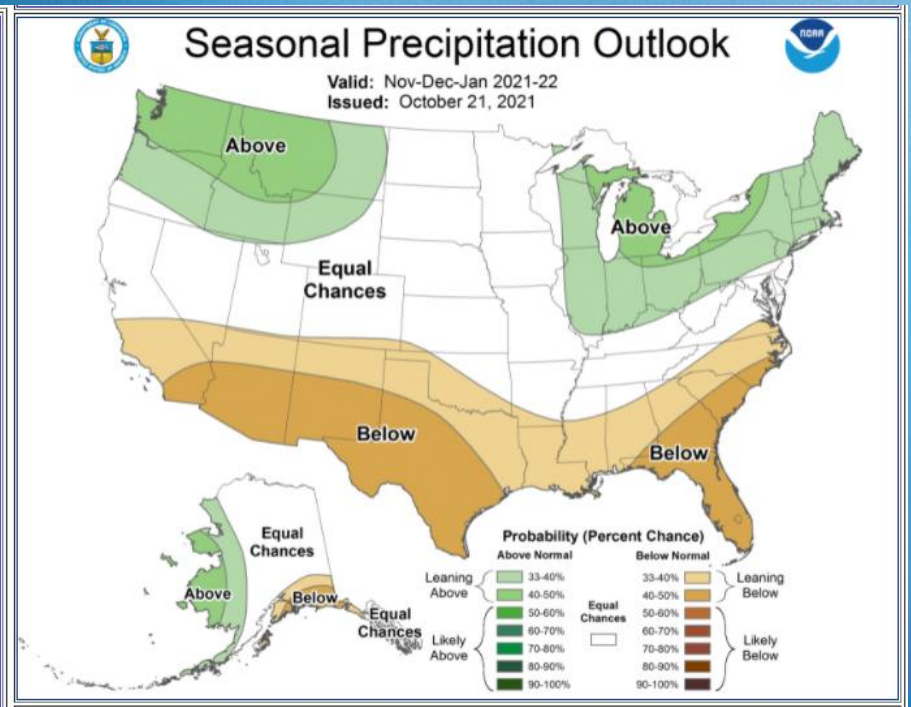
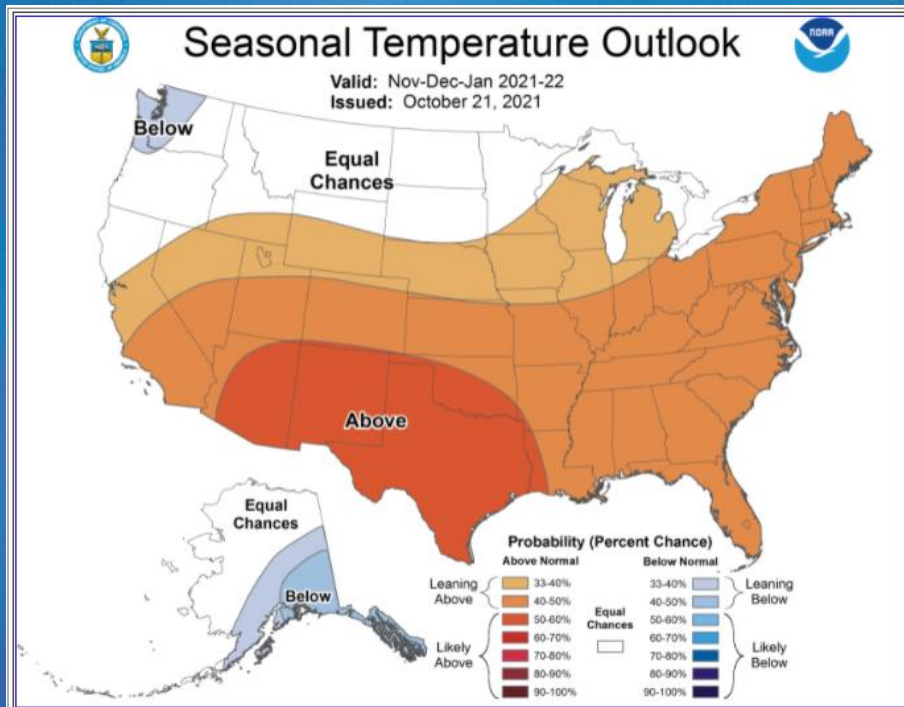




# NOAA 3-Month Outlook

## Temperature

## Precipitation







# SWRCB Data 10-26-21

Statewide Use and Production | **Cumulative Savings** | Supplier Results | Drought Reporting | Conservation Actions

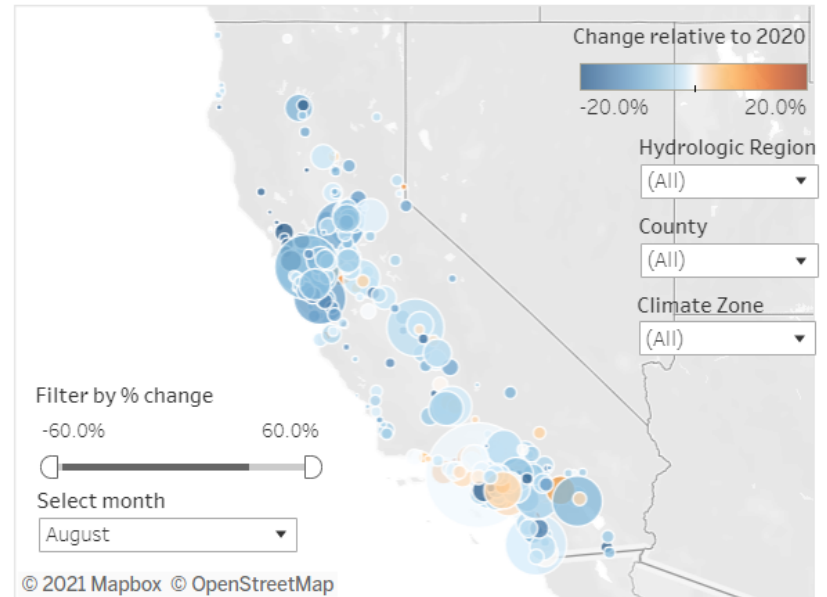
## Progress Towards 15% Savings

Region Type

Hydrologic Region

Region	July	August	Cumulative
Central Coast	-3.0%	-5.2%	-3.9%
Colorado River	-1.2%	-5.5%	-4.5%
North Coast	-16.7%	-18.3%	-17.5%
North Lahontan	0.0%	-5.2%	-2.6%
Sacramento River	-0.8%	-8.1%	-4.4%
San Francisco Bay	-9.1%	-9.9%	-9.5%
San Joaquin River	-0.9%	-3.4%	-2.0%
South Coast	-0.1%	-3.1%	-1.7%
South Lahontan	1.8%	-4.2%	-1.2%
Tulare Lake	-1.6%	-3.8%	-2.7%
Statewide	-1.9%	-5.0%	-3.5%

This table shows the change in 2021 production relative to a 2020 baseline. The cumulative savings calculation is the sum of July to the most recent reporting month. Cumulative savings are only calculated for suppliers with complete data.



Relative bubble size reflects total monthly production.

Agency	Conservation target %	Days per week watering	Aug 2021 use vs 2020 (%)	Sep 2021 use vs 2020 (%)
Cal-Am	Please	3 vol	-8.6	-6.4
CWD	15	3	11.1	-5.2
CHWD	10		-20.0	-7.0
EID	15		-7.2	-1.2
EGWD	15	3 vol	-10.3	-3.3
FOWD	20	1 vol	-9.6	-6.0
Folsom	20 mandatory	2	-6.5	-7.0
GSWC	Please		-0.9	3.3
OVWC	15	3 vol	-13.4	-2.0
PCWA (ret tr)	Please		-11.9	10.8
RLECWD	Please			
Roseville	20 mandatory	3	-2.6	-2.2
Sacramento	15	2	-7.2	-3.7
SCWA	15	3 vol	-7.7	-1.9
SJWD	15	3 vol	-1.6	-1.5
SSWD	15	3 vol	-8.1	0.6





# May-Sep 2021 vs 2020 and Sep 2020 vs 2013

